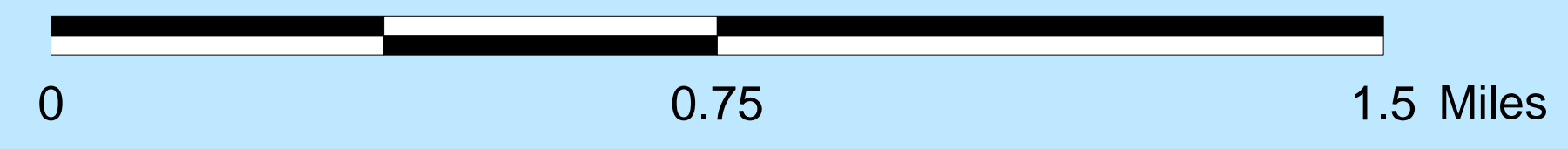
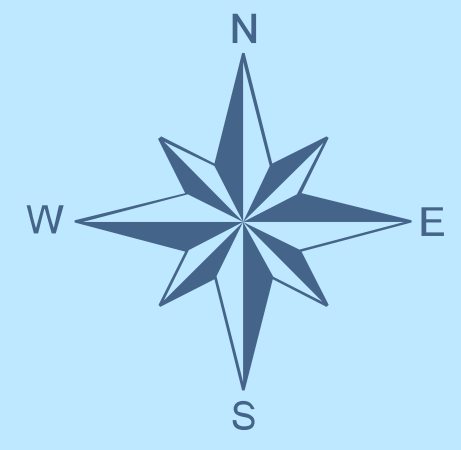




General Plan Land Use Designations



City of Santa Cruz
Planning Department
809 Center St. Room 206
Santa Cruz, CA 95060
Ph: 420-5100



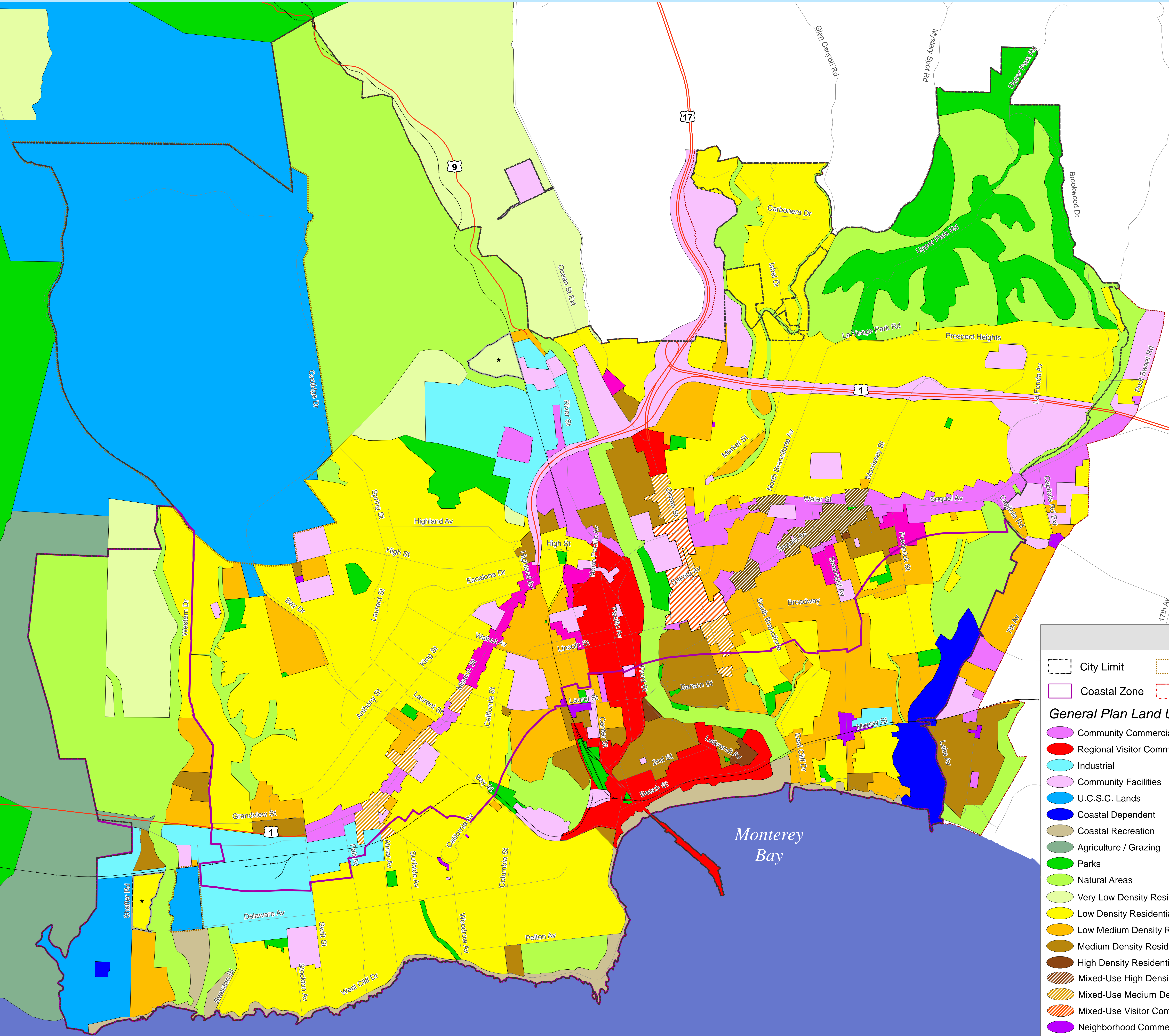
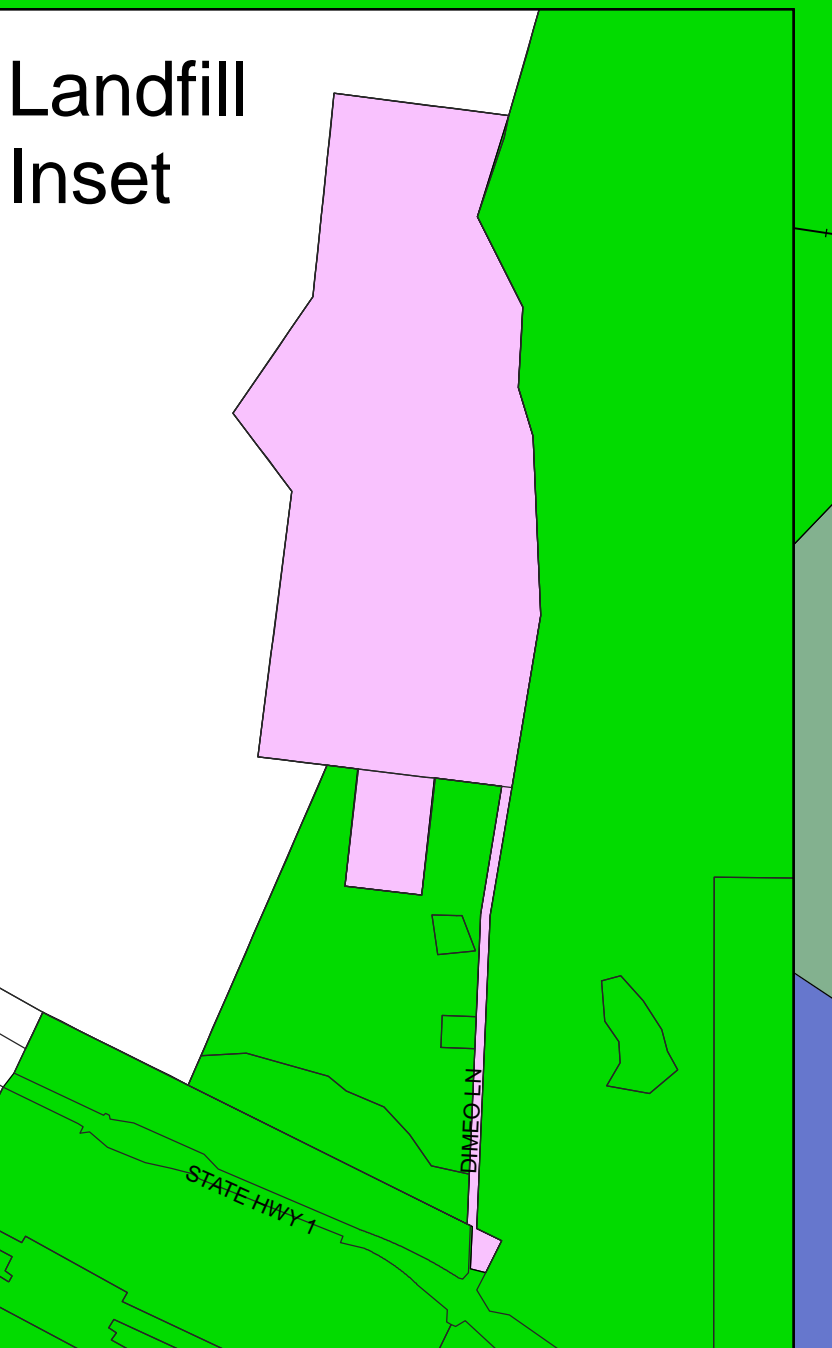
SANTA CRUZ
2030

The Land Use Diagram is intended to be used in conjunction with the General Plan 2030 Goals, Policies and Programs Document. The document describes the guidelines, standards, and description of the land use designations on the map.

Projection: California State Plane Nad 83 Zone 3 (Feet)

Disclaimer:
City of Santa Cruz has provided this map to allow easy access and a visual display of City information. We have made considerable effort to assure the accuracy of the maps and data provided; nevertheless, some information may be inaccurate. The data available including all maps, tables, numbers, graphics, and text (hereinafter collectively referred to as the "information,") is provided on an "AS IS," basis.

City of Santa Cruz shall assume no liability for any errors, omissions or inaccuracies in the information provided regardless of how accessed or provided.



Legend

- City Limit
- UCSC Campus
- Specific or Area Plan Required
- Coastal Zone
- Sphere of Influence

General Plan Land Use Designations

- Community Commercial
- Regional Visitor Commercial
- Industrial
- Community Facilities
- U.C.S.C. Lands
- Coastal Dependent
- Coastal Recreation
- Agriculture / Grazing
- Parks
- Natural Areas
- Very Low Density Residential (.1-1 DU/Acre)
- Low Density Residential (1.1-10 DU/acre)
- Low Medium Density Residential (10.1-20 DU/acre)
- Medium Density Residential (20.1-30 DU/acre)
- High Density Residential (30.1-55 DU/acre)
- Mixed-Use High Density (MXHD), 1.0 to 2.75 FAR, 10 to 55 DU/AC
- Mixed-Use Medium Density (MXMD), 0.75 to 1.75 FAR, 10 to 30 DU/AC
- Mixed-Use Visitor Commercial (MXVC), 1.0 to 2.75 FAR, 0 to 55 DU/AC
- Neighborhood Commercial
- Office